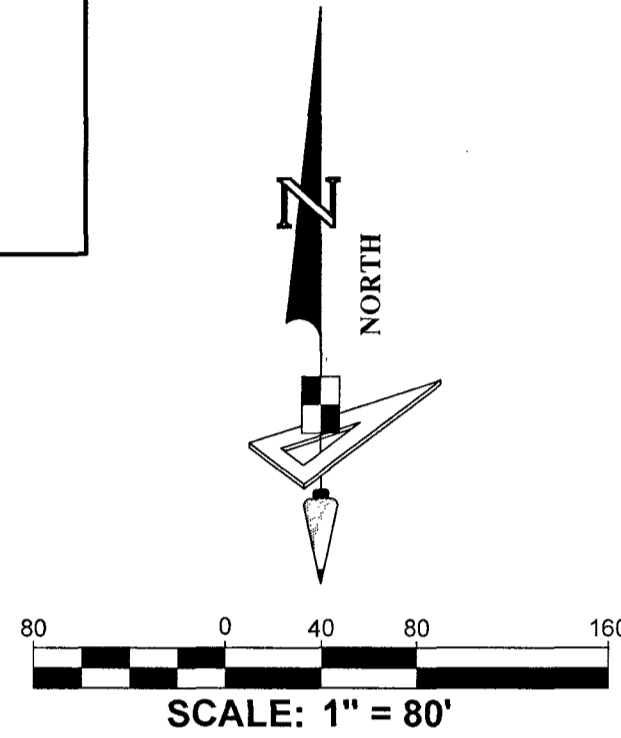
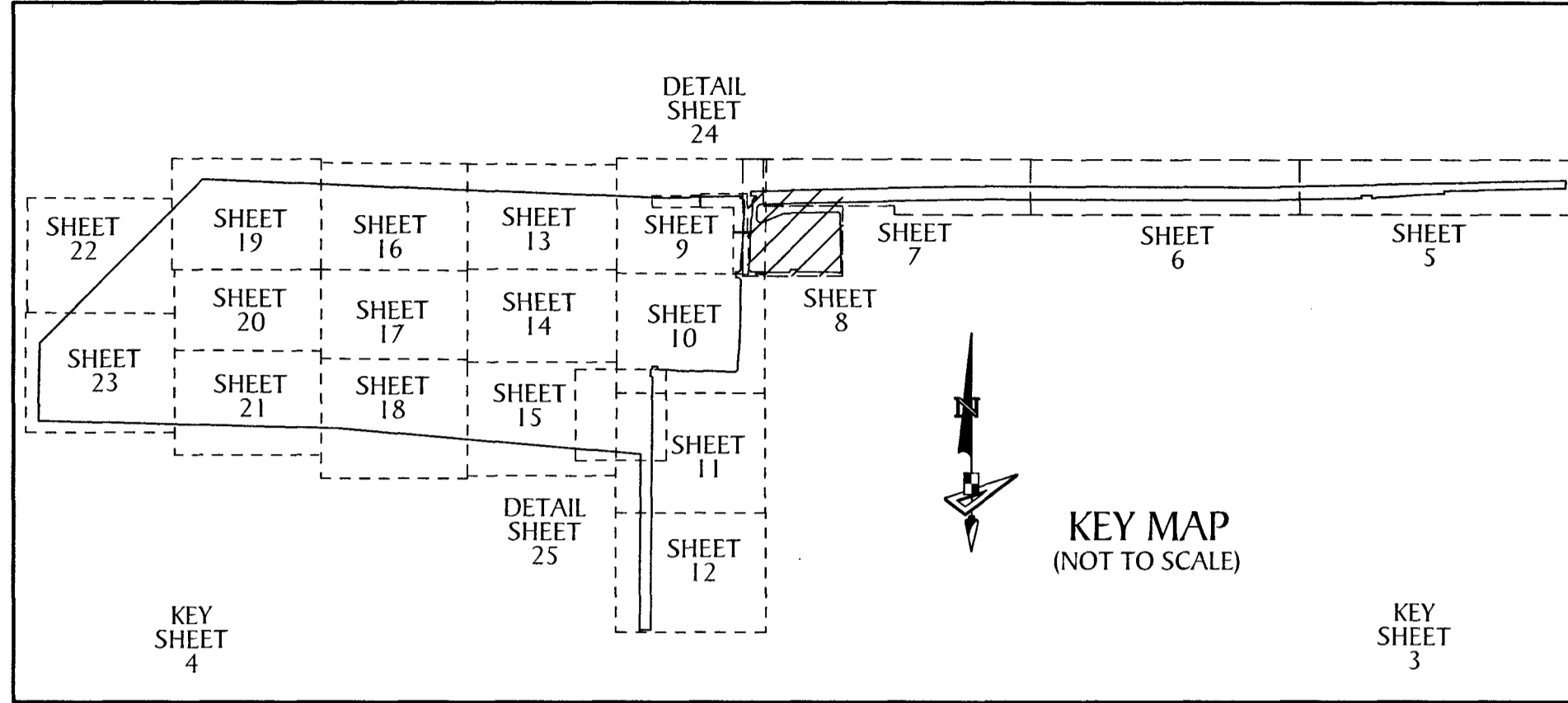
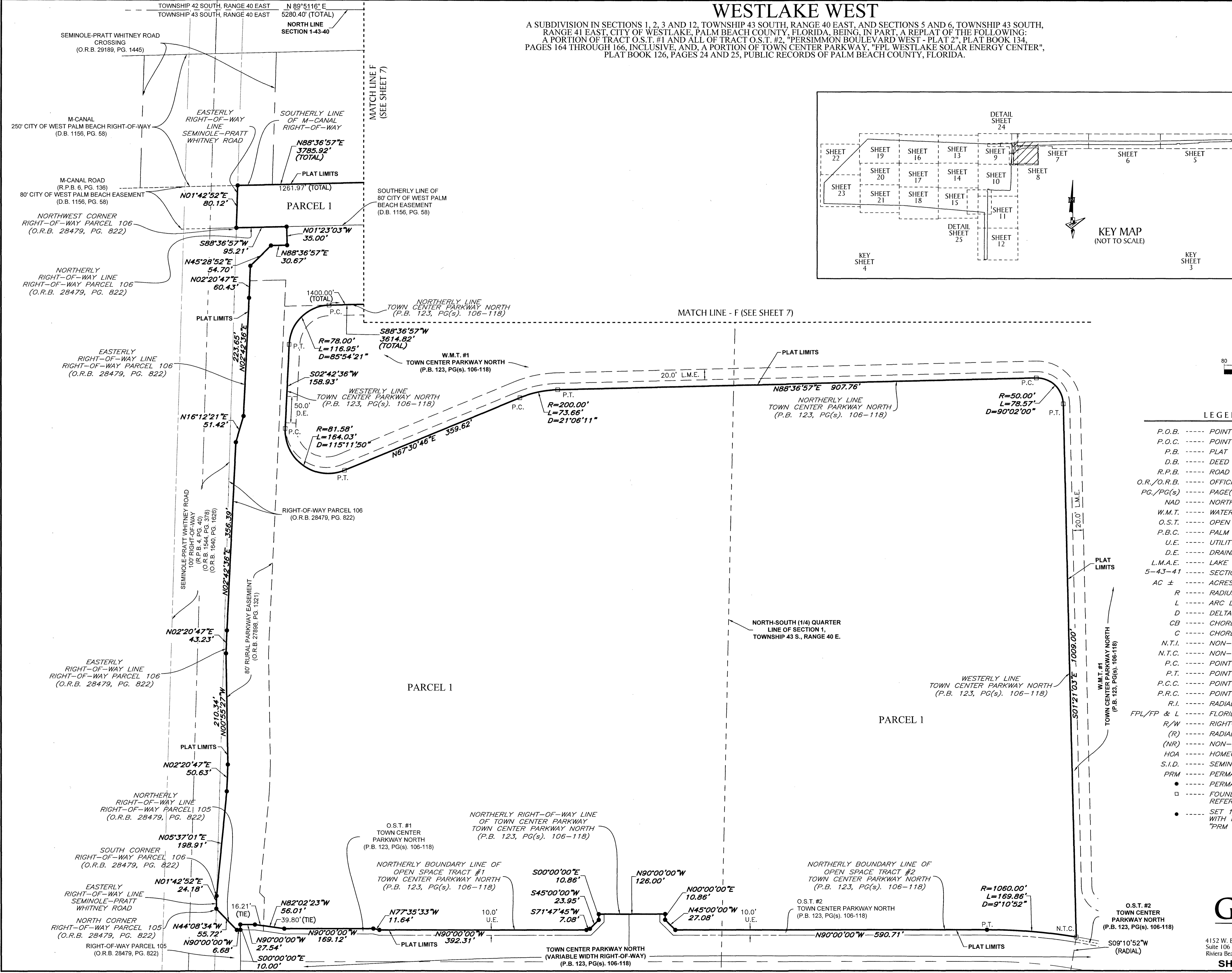


WESTLAKE WEST

A SUBDIVISION IN SECTIONS 1, 2, 3 AND 12, TOWNSHIP 43 SOUTH, RANGE 40 EAST, AND SECTIONS 5 AND 6, TOWNSHIP 43 SOUTH, RANGE 41 EAST, CITY OF WESTLAKE, PALM BEACH COUNTY, FLORIDA, BEING, IN PART, A REPLAT OF THE FOLLOWING: A PORTION OF TRACT O.S.T. #1 AND ALL OF TRACT O.S.T. #2, "PERSIMMON BOULEVARD WEST - PLAT 2", PLAT BOOK 134, PAGES 164 THROUGH 166, INCLUSIVE, AND, A PORTION OF TOWN CENTER PARKWAY, "FPL WESTLAKE SOLAR ENERGY CENTER", PLAT BOOK 126, PAGES 24 AND 25, PUBLIC RECORDS OF PALM BEACH COUNTY, FLORIDA.

56



LEGEND

- P.O.B. ----- POINT OF BEGINNING
- P.O.C. ----- POINT OF COMMENCEMENT
- P.B. ----- PLAT BOOK
- D.B. ----- DEED BOOK
- R.P.B. ----- ROAD PLAT BOOK
- O.R./O.R.B. ----- OFFICIAL RECORDS BOOK
- PG./PG(S) ----- PAGE(S)
- NAD ----- NORTH AMERICAN DATUM
- W.M.T. ----- WATER MANAGEMENT TRACT
- O.S.T. ----- OPEN SPACE TRACT
- P.B.C. ----- PALM BEACH COUNTY
- U.E. ----- UTILITY EASEMENT
- D.E. ----- DRAINAGE EASEMENT
- L.M.A.E. ----- LAKE MAINTENANCE ACCESS EASEMENT
- 5-43-41 ----- SECTION-TOWNSHIP-RANGE
- AC ± ----- ACRES PLUS OR MINUS
- R ----- RADIUS
- L ----- ARC LENGTH
- D ----- DELTA ANGLE
- CB ----- CHORD BEARING
- C ----- CHORD
- N.T.I. ----- NON-TANGENT INTERSECTION
- N.T.C. ----- NON-TANGENT CURVATURE
- P.C. ----- POINT OF CURVATURE
- P.T. ----- POINT OF TANGENCY
- P.C.C. ----- POINT OF COMPOUND CURVATURE
- P.R.C. ----- POINT OF REVERSE CURVATURE
- R.I. ----- RADIAL INTERSECTION
- FPL/FP & L ----- FLORIDA POWER AND LIGHT
- R/W ----- RIGHT-OF-WAY
- (R) ----- RADIAL
- (NR) ----- NON-RADIAL
- HOA ----- HOMEOWNERS ASSOCIATION
- S.I.D. ----- SEMINOLE IMPROVEMENT DISTRICT
- PRM ----- PERMANENT REFERENCE MONUMENT
- ----- PERMANENT CONTROL POINT
- ◻ ----- FOUND PERMANENT REFERENCE MONUMENT
- ----- SET 1/2" IRON ROD WITH PRM CAP STAMPED "PRM LB 7768"

GeoPoint Surveying, Inc.

4152 W. Blue Heron Blvd. Phone: (561) 444-2720
 Suite 106 www.geopointsurvey.com
 Riviera Beach, FL 33404 Licensed Business Number LB 7768

SHEET 8 OF 25 SHEETS